



ANNUAL
REPORT

2020

A Year Like No Other

A close-up, grayscale photograph of a dog's face, likely a pit bull or similar breed. The dog's eye is visible on the right side of the frame, showing a vibrant rainbow-colored iris. The background is a soft, out-of-focus green.

“ WE LOOK TO **2021**
WITH STRENGTH,
CREATIVITY, AND
OPTIMISM ”

CONTENTS

04

From the CEO

05

From the Chair

06

Our Mission, Vision,
Values, and Goals

08

Who We Are/What We Do

12

Our Board and Officers

14

Our Consultants

16

Our Contributors

18

DogWellNet.com

20

Harmonization of Genetic
Testing for Dogs

22

2020 Milestones

24

Administration

26

2021: A Renewed Sense
of Optimism



From the CEO

In a year when simply surviving represented an accomplishment, IPFD made significant strides in several key initiatives in 2020, and we look to 2021 with strength, creativity, and optimism.

Reviewing my message from 2019, several points deserve repeating in the context of 2020. IPFD was designed to enhance and share the great work being done by our Partners and others in the dog world. In 2019 I said, “The acknowledgement of the need for multi-stakeholder, international collaboration and action is widespread and consistent.” Still true, however, the increased and unprecedented demands of local, regional, and national responsibilities of our volunteers and collaborators due to the pandemic led to further dependence on IPFD to maintain and advance international perspectives.

The need for the impartial, balanced, big-picture voice of IPFD, and our inclusive approach to complex challenges of dog health and welfare, was even clearer in 2020, when various legislative challenges led to division and dispute within the international dog community. The positive response to [IPFD documents and webinars on Reframing Discussions](#) and promoting international cooperation and collaboration bodes well.

2020 saw a new initiative with the World Small Animal Veterinary Association: [a regular feature in their Bulletin](#), linked to [Get a GRIHP!](#) articles on our site to heighten understanding of breed-specific issues internationally, for veterinarians, owners, and breeders.

As IPFD continues to enhance stability and sustainability, with exciting challenges ahead, we can celebrate and capitalize on our potential to work for the love of dogs and for the people who love dogs.

Dr. Brenda N. Bonnett

CEO, International Partnership for Dogs

From the Chair

Thanks to everyone who supported IPFD in our work in 2020, as we approach 2021 with the continued commitment to make a difference in the world of dogs.

The IPFD Board continued to expand and strengthen in 2019 and 2020. A major focus has been on communication and outreach, as well as solidifying business processes. Fundraising remains a priority, and, although 2020 created a challenging environment, our economic position is stable and strong going into 2021.

As President of the Swedish Kennel Club, and through our affiliation with other Nordic and international clubs, I saw firsthand the impact of the pandemic on the dog world – from individual owners and exhibitors up to those in major organizations. Local, regional, national, and international activities were reduced or totally curtailed. For such a socially oriented group as the dog community, this was a trying and sad year, and the impact on the future remains to be seen.

IPFD, already an essentially virtual organization, remained resilient and effective. DogWellNet.com continues to be the integrating hub for resources, and our core developments on canine health, welfare, and genetics provide an integrated platform to support actions across many stakeholder groups.

For IPFD to thrive and survive, to not only maintain our programs, but to also make additional strides for dog health, well-being, and welfare, is a testament to our mission, our people, our Partners, and to the dogs who are such an important part of our lives.

Dr. Pekka Olson

Chair, International Partnership for Dogs



Photo by Måns Engelbrektsson



Mission

The mission of the International Partnership for Dogs (IPFD) is to facilitate collaboration and sharing of resources to enhance the health, well-being, and welfare of pedigree dogs and all dogs worldwide.

Vision

An enduring global collaboration enhancing dog health, well-being and welfare, and human-dog interactions.

Values

- Dog health, well-being, and welfare, and human-dog interactions contribute to the quality of life for both species.
- The world is a better place because we share it with dogs.
- Dog issues are important around the globe, and international sharing and cooperation are needed.



Goals

The general goals of the IPFD are to:

- Enhance the health, well-being, and welfare of dogs, and enrich human-dog interactions.
- Facilitate the sharing of knowledge, information, experience, and resources across stakeholders, e.g., kennel clubs, veterinary and other professional organizations, health foundations, and others, to improve health and well-being of purpose-bred dogs.
- Provide structure, evaluation, and interpretation of information to support the actions of stakeholders in dog health, well-being, and welfare.
- Facilitate specific actions to improve health and well-being of dogs, e.g., supporting globally relevant breed-specific breeding strategies.
- Run the web platform DogWellNet.com.
- Bring the dog community closer together through DogWellNet.com.



Photo by Zigmars Berzins

Who We Are

The International Partnership for Dogs (IPFD) is a non-profit organization leading a global, multi-stakeholder effort to address issues affecting dog health, well-being, and welfare.

Our people – [our Board and Consultants](#) – come from seven different countries. Among them, we count veterinarians, presidents of national kennel clubs, and key advisors to kennel and breed clubs and to the pet industry. We have four with PhDs or Honorary Doctorates; several with other advanced training and expertise in areas such as dog reproduction, behaviour, and nutrition; and four judges of conformation or other exhibitions.

Our [Contributors, Partners, and Sponsors](#) include national kennel clubs, international cynological organizations, groups with breed specific interests, educational/academic and professional organizations, and key players in the pet industry.

Together with other participating organizations, companies, and individuals, we foster collaborative action to achieve our shared goals, support human-animal interactions, and benefit all dogs worldwide.



What We Do

Coordination

The issues of dog health, well-being, and welfare are extremely complex and extend across international borders to include organizations and individuals from numerous jurisdictions, sectors, and disciplines. IPFD is an essential coordinating mechanism bringing these stakeholders together, harnessing their strengths, and facilitating collaborative efforts. Without IPFD, we would continue to see duplication of effort (i.e., parallel, but isolated initiatives), weakened or unfocused international/multi-stakeholder projects, and many other missed opportunities – all to the detriment of dogs (and humans) around the world.

Information

We collect, collate, clarify, and create resources to provide evidence-based information and expert opinion on a broad range of issues affecting dog health, well-being, and welfare. As curators, we ensure that key resources needed to inform actions are accessible to all stakeholders, from owners to experts, individuals to organizations, and local to global efforts for individual dogs and populations.

Collaboration

We encourage, initiate, and facilitate collaboration among our Contributors, Partners, and Sponsors, and other stakeholders in the dog world.

Action

We provide a global platform for all stakeholders in dog health and welfare. We share information – most of it free to all – through our online channels (e.g., DogWellNet.com) and provide a framework for collaboration, including the IPFD International Dog Health Workshops (IDHWs), key initiatives (e.g., Harmonization of Genetic Testing for Dogs (HGTD)), working groups, expert panels, event presentations, and other outreach activities.

How We Work

IPFD is a truly people-driven service organization. Our structure and resources (a modest budget and small group of consultants, volunteers, and Board Members) facilitate the activities of our stakeholders to achieve our individual and collective priorities for the health and welfare of dogs.

As a growing, independent voice within the global dog community, we aim to provide the best possible information and advice to assist our stakeholders in making optimal decisions for their members, customers, and breeds of interest. IPFD provides and supports a ‘big picture’, balanced, transparent, and integrated approach to the complex challenges for dogs and the people who care about them.

Our key audiences are, first and foremost, committed and health-conscious breeders, as well as those who support and advise them (kennel and breed club health committees, breeding advisors, veterinarians, researchers, etc.), but also include essentially all those involved in the world of dogs, including kennel/breed clubs, dog owners, the pet industry, and more. Our consultants work tirelessly to engage others who embrace our vision and are willing to share their information, expertise, and passion for dogs.

We connect with these stakeholders through our online platform, DogWellNet.com, social media, and direct correspondence, in addition to hosting/attending face-to-face meetings, conferences (e.g., the IPFD IDHWs), seminars, and other educational/networking events.

Where We Work

As a “virtual” organization, we have no physical headquarters/offices and, therefore, minimal fixed costs; over 90% of our budget goes to programs. Essentially, we work wherever we are and with those who share our mission and goals.

IPFD is registered in Sweden, and financial oversight is provided by the Swedish Kennel Club. Our consultants work from their homes (Canada, USA, Sweden, Spain, etc.) or wherever they are traveling in the world advancing the mission of IPFD.

We have collaborating experts, partners, and contributors from Europe, North America, Australia, and Asia, but we are continuing to expand our reach, with members of and visitors to DogWellNet.com from six continents and dozens of countries.

[Learn more about IPFD](#) on DogWellNet.com.

“IPFD, already an essentially virtual organization, remained resilient and effective.”

Dr. Pekka Olson, Chair



“TO A CHILD
AND A **DOG**, A
NEW MORNING
IS A MIRACLE
OF INFINITE
POSSIBILITIES”

Our Board & Officers

The IPFD Board is comprised of individuals with respected international reputations, who represent a broad array of stakeholders in dog health, well-being, and welfare, and who comprise a range of backgrounds and abilities.

Among our [Board](#) are five veterinarians, two Presidents of national kennel clubs, and others with key roles at kennel clubs. Four have PhDs or Honorary Doctorates, with most having other advanced training and expertise in areas such as dog reproduction, behaviour, nutrition, or other specialties. Three are judges of conformation or other exhibitions. Two board members serve as executives of a shelter organization, and one is a lawyer. Three currently or previously have worked in the pet industry.

This breadth of knowledge and experience, combined with a passionate devotion to dog health and welfare, underpins our mission, vision, and goals.

We thank Gregoire Leroy – a key IPFD collaborator from day one – who transitioned off the Board in 2020 and welcome Alexandre Balzer, who joined us in November.

[Detailed bios](#) for IPFD Directors and Officers are available on DogWellNet.com.



Pekka Olson DVM, Dr. hc
Chair, Sweden



Bill Lambert
Vice-Chair, UK



Peter Friedrich PhD, Professor
Germany



Kirsi Sainio PhD
Finland



Marty Greer DVM, JD
USA



Alexandre Balzer DMV, CEAV, DU
France



Dave Eikelberg PhD (Candidate), MSc
USA

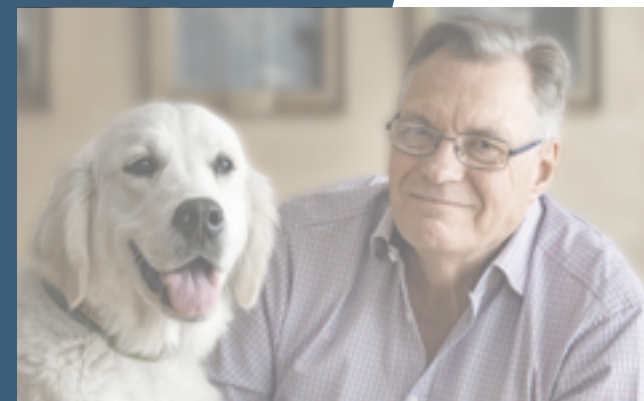
Officers (Ex-officio on the Board)



Barbara Thiel DVM
Germany



Brenda N. Bonnett DVM, PhD
Chief Executive Officer, Canada



Ulf Uddman
Chief Financial Officer, Sweden



Photo by PHOTKALDE

Our Consultants

We allocate the bulk of our budget to maintain a small team to manage our modest resources and facilitate the activities of our stakeholders, with the aim of achieving our collective goals.

People are always the strength of an organization, and now is a good time to acknowledge and thank the small but committed team of consultants in several countries who do the lion's share of the work at IPFD.

[View their profiles](#) on DogWellNet.com.



Aimee Llewellyn-Zaidi

HGTD Project Manager, USA



Monique Megens DVM

Chief Operating Officer, Spain



Ann Milligan

Website Content Manager, USA



Dave St. Louis

Communications Specialist, Canada



James Skinner

Recording Secretary, UK



Provisionists

Provisionists

Web Hosting/Management

<?=\$CodingJungle;?>

Michael Edwards

PHP Developer

Our Contributors

Partners of the International Partnership for Dogs and Sponsors of specific IPFD initiatives

2020 Contributing Partners



2020 Collaborating Partners



HGTD Contributing Leadership Sponsors 2020

Agria Djurförsäkring (Agria Animal Insurance)
American Kennel Club
AKC Canine Health Foundation
Canadian Kennel Club
International Partnership for Dogs

Irish Kennel Club
The Kennel Club
Norsk Kennel Klub (Norwegian Kennel Club)
Raad van Beheer (Dutch Kennel Club)
Suomen Kennelliitto (Finnish Kennel Club)

Verband für das Deutsche Hundewesen
(German Kennel Club)
Société Centrale Canine (French Kennel Club)
Svenska Kennelklubben (Swedish Kennel Club)

GTP Sponsors 2020



GTP Supporters 2020

For a full list of HGTD supporters and participants, go to: <https://dogwellnet.com/ctp/>

Get Involved!

- Organizations interested in IPFD partnerships and sponsorships can contact IPFD CEO Dr. Brenda Bonnett at brenda.bonnett@ipfdogs.com.
- GTPs wishing to participate in the HGTD can contact aimee.llewellyn-zaidi@ipfdogs.com or brenda.bonnett@ipfdogs.com.
- Organizations or individuals can visit our homepage (<https://dogwellnet.com/>) to make a donation to support IPFD and/or HGTD.

DogWellNet.com

DogWellNet.com functions as an information hub, providing links, documents, and additional resources to breeders, owners, veterinarians, and others in the dog world.

[DogWellNet.com](https://www.dogwellnet.com) is an open access, ever-expanding information hub. For an overview of the site, including an explanation of key content areas and features, please visit the article [DogWellNet Basics](#).

Although almost all DogWellNet.com content is available to guests, we encourage readers to [sign up](#) (free). As of the publishing date for this report, more than 1,500 people have registered, including more than 900 Members and 600+ Advanced Members.



About IPFD & DogWellNet.com

Everything you need to know about [our organization, IPFD](#), and [our online platform, DogWellNet.com](#)



Breeds Database

Our [Breeds Database](#) lists 180 breeds. Information includes breed standards, population data, club newsletters, breed databases, videos, and more. In 2020, we added seven breeds and updated many more. Native Breeds and Additional Resources sections are also provided. We thank our breed experts and clubs for sharing information on their breeds with our community.



Extremes of Conformation

[Highlights of current issues and timely discussions](#) for consumers, breeders, veterinarians, researchers, and other members of our community



Welfare

[Welfare issues](#) related to the breeding and distribution of purposely bred dogs, issues and legislation related to health and welfare, and human-animal interactions



Health & Breeding

[Topics of interest](#) for anyone involved in breeding dogs, including those providing advice to breeders, breed clubs, or kennel clubs



International Actions

[Resources and initiatives](#) arising from topics at the IPFD International Dog Health Workshops (IDHWs)



Blogs

[Commentary on key issues](#) impacting the dog world



Education

[Resources, approaches, and events](#) focused on education related to health, well-being, and welfare in dogs



IPFD International Dog Health Workshops (IDHWs)

Materials from the [IPFD International Dog Health Workshops](#), which bring together stakeholders from around the world to improve the health, well-being, and welfare of dogs



Harmonization of Genetic Testing for Dogs (HGTD)

Database, articles, and other resources associated with the IPFD's [Harmonization of Genetic Testing for Dogs](#) initiative

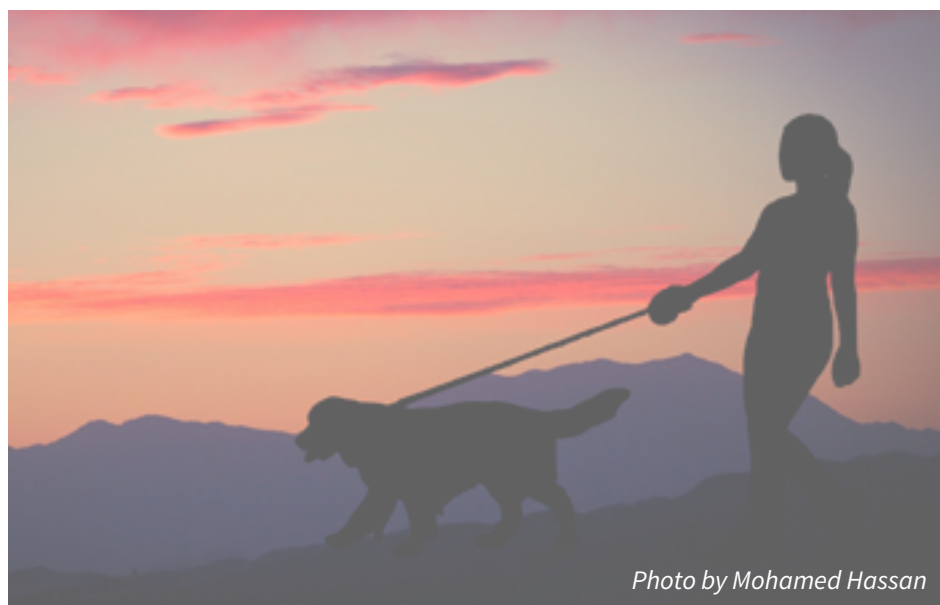


Photo by Mohamed Hassan

Stay Informed!

Published several times a year, our online newsletter, [DogWellNet Digest](#), features the latest news from IPFD and DogWellNet.com.

IPFD 
DogWellNet

Digest

Harmonization of Genetic Testing for Dogs (HGTD)



Harmonization of
Genetic Testing
for Dogs

2020 brought a number of new resources, tools, and other important developments in the HGTD.

An expansion of our breed-specific information, the new [Breed Relevance Ratings \(BRR\)](#) support evidence-based usage and application of genetic tests. BRRs are a way to capture current research and expert opinion on breed-specific tests, as well as many crossbreeds. Canine health specialists, as well as dog owners, can use BRR to more easily identify tests that may be important to consider in health and breeding decisions. The BRRs reference the extensive research information within the Phenex Database. Used together, these resources aim to provide a more well-rounded approach to genetic testing to aid in decision making.

Complimentary to BRR, the information gathered in producing BRRs has added significantly to our phenex database, providing more breed-specific research links, contributions from Breed Clubs, researcher commentary, and test application recommendations.

***HGTD GOAL:** Improve standardization of, and access to, robust genetic testing to support health improvements and a sustainable future for healthy dogs. The portal for information on Genetic Testing Providers (labs), genetic tests, and tests by breed. There are two major components: the Quality Testing Database and Genetic Counselling Resources.*

***Learn More:** <https://dogwellnet.com/ctp/>*

Despite only launching this year, we are thrilled that more than half of the almost 2000 breed-specific phenes have been assessed for a Breed Relevance Rating. This represents hundreds of hours searching and reviewing research papers, liaising with international researchers and experts, and cross-referencing with external research groups and databases. Significant contributions for review and inclusion have come from breed experts representing years of experience as breed health liaisons, health advocates, and breed clubs and councils.

A new blog, [HGTD and Genetic Testing](#), highlights features of the HGTD database, and discusses many practical and interesting aspects of genetic testing in dogs.

We were pleased to see that, despite the many challenges of the global pandemic in 2020, the vast majority of our Genetic Test Providers (GTPs) renewed or extended their participation in HGTD. We now offer three levels of participation: *Sponsor*, *Supporter*, and *Participant* (and *Academic Participant*). Each level is provided a digital emblem to indicate their continued participation in HGTD.

This year also saw a major change in our HGTD page display, showing not only all breed-specific tests, but also in tests available to all dogs, in one easy search. For those breeds who do not currently have any breed-specific tests available, they are linked to closely associated breed options. Four major database reviews were undertaken to improve and update gene and mutation information, links to our research collaborators and peer-reviewed publications, and accommodate the expanding breed-specific information.

82

A GROWING LIST OF GTPs

The HGTD Database now includes 82 academic and commercial genetic test providers (GTPs) in 22 countries.

45

PARTICIPATING GTPs

The Database currently includes information on accreditation and tests for 45 collaborating GTPs.

346

PHENES/TESTS

346 phenes/tests with gene and mutations provided, links to research, clinical information, and additional publications. 195 phenes have at least 1 breed-specific reference, with most phenes also having additional breed-specific information on test usage or application in the breeds.

2

KEY COMPONENTS

- Database searchable by Breed, Test/Disease, and GTP/Lab
- Genetic Counselling Resources



BREED RELEVANCE RATINGS

- 160 phenes with breed-specific information
- 1017 of 1891 breed-specific tests have BRRs
- Collaborative contributions have come from multiple researchers around the globe

12

HGTD & GENETIC TESTING BLOG

We published 12 entries in the HGTD & Genetic Testing blog this year, providing regular updates on our rapidly expanding genetic testing resources.

2020 Milestones

In 2020, one of our goals was to further strengthen our branding of IPFD to enhance our ability to deliver the resources mentioned in this report. With an even greater presence for IPFD, we can further address our mission of dog health, well-being, and welfare, and support of human-dog interactions. In addition to enhancements to the website, we expanded our membership globally, building from the grassroots of our target stakeholders and those already collaborating with IPFD, while maintaining our close alliance with the decision leaders represented by our Contributing Partners.

IPFD Operations

IPFD Board

- Welcomed newest Board Member in November.
- Added new committees, including the Communications and Business/Fundraising Committees.

Partners and Sponsors

- Welcomed/initiated discussions with several new IPFD Partners/Sponsors.
- Continued to develop outreach tactics with our partners, such as IPFD Collaborating Partner, The World Small Animal Veterinary Association (WSAVA). IPFD is submitting a [monthly feature](#) in their online news section and WSAVA Bulletin.

Communications

- Published [2019 Annual Report: A Growing Voice](#).
- Enhanced messaging and branding for IPFD with new [“About IPFD” section](#) on DogWellNet.com.
- Increased visibility in the dog world (e.g., WSAVA collaboration).
- Published seven issues of [DogWellNet Digest](#).
- Expanded social media reach with more posts and followers.
- Brenda Bonnett listed as first author of International chapter of textbook, *International and National Approaches to Brachycephalic Breed Health Reforms* (to be published in June 2021).

Major Initiatives

DogWellNet.com content expanded with dozens of new articles, blogs, and resources from major initiatives.

International Dog Health Workshops (IDHWs)

- A [report on the 4th IDHW](#) published in Canine Medicine and Genetics. Actions prioritized at meeting are underway, and outcomes are being realized.
- Prioritized in the Extremes theme at the 4th IDHW, the new [International Working Group on Extreme Conformation in Dogs](#) (IWGECD) enacted.
- Significant advancement of actions under Genetics, Breed Health Strategies, and Supply and Demand.
- Possible virtual meeting in 2021, and planning started for IDHW in 2022.

Breeds Database

- Added seven new breeds and updated many others.
- Breeds of the Month features linked to [Pedigreed Breeds Database](#) and content such as Globally Relevant Integrated Health Profiles (GRIHPs).

Harmonization of Genetic Testing for Dogs (HGTD)

- [HGTD Database](#) expands to 82 international test providers and 45 actively participating GTPs in 22 countries.
- Database grows to 346 phenes, with gene and mutations provided, links to research, clinical information, and additional publications.
- New [Breed Relevance Ratings](#) (BRR) support evidence-based usage and application of genetic tests.
- Revised 3-tiered system for commercial participants: Sponsors, Supporters, and Participants.
- Updated HGTD page display to simplify search results.

Bringing It All Together: Let's Get a GRIHP!

'[Get a GRIHP!](#)' initiative articles on the Big Picture of health and welfare within breeds offer resources for those who want to understand the key issues for individual dogs and breed populations, internationally.

- Five breeds ([Welsh Corgis](#) | [Dachshunds](#) | [French Bulldogs](#) | [Australian Shepherds](#) | [Salukis](#)) with GRIHPs published since August.
- GRIHPs referenced in our [WSAVA Meet the Breed](#) features.
- IPFD contributor Ian J. Seath published an article focusing on IPFD's Get a GRIHP! on Breed Health Initiative in Our Dogs and his Sunsong Dachshunds blog.

Reframing Current Challenges Around Pedigree Dogs

- IPFD published an article entitled: [Reframing Current Challenges Around Pedigree Dogs: A Call for Respectful Dialogue, Collaboration and Collective Actions](#).
- Brenda Bonnett has participated in several online events to encourage further discussion, including a virtual presentation for the 2020 Swedish Veterinary Association national conference in October and a [webinar](#) hosted by the All-Party Parliamentary Dog Advisory Welfare Group (APDAWG) on 1 December.
- Compiled a [list of media stories and articles](#) posted by IPFD Partners and other contributors helping to spread the word on IPFD's Call for Collective Actions for Health and Welfare of Pedigree Dogs.



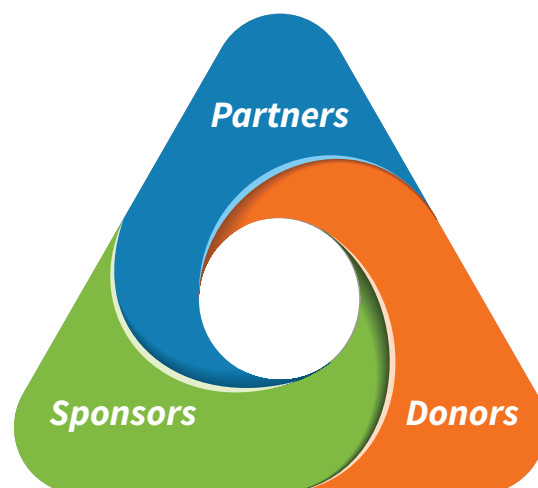
See a [full list of our 2020 Milestones](#) on DogWellNet.com

Administration

IPFD's model and resources (a modest budget and small group of consultants and Board Members) facilitate the activities of our stakeholders to achieve their priorities for the health and welfare of all dogs.

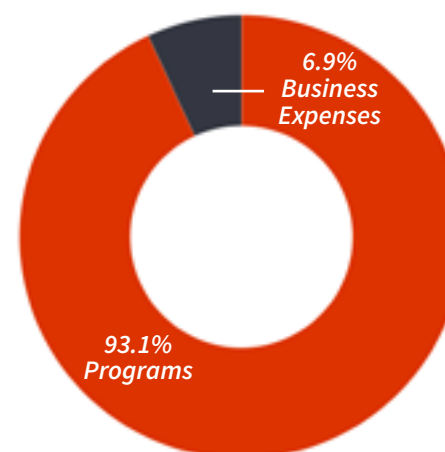
2020 Income Overview

2020 Income:
€ 243,949



2020 Expense Summary

2020 Expenses:
€ 290,480



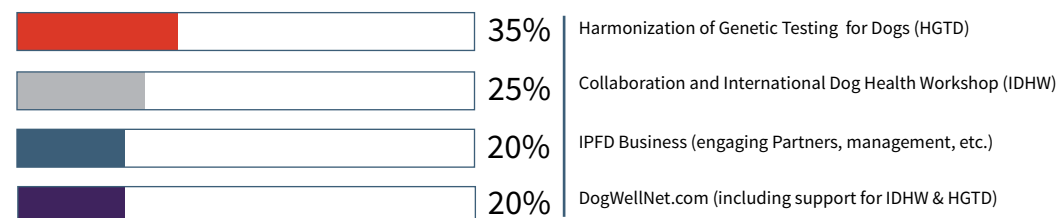
Administration Notes

Total Assets (start of 2020): € 320,000
Auditor: BDO International

We thank the Swedish Kennel Club (SKK) for providing bookkeeping and accounting services.

Programs Breakdown

Approximate distribution of effort within Programs in 2020



“

On CKC's partnership with IPFD:

*IT HAS HELPED CKC TO IMPROVE
AWARENESS & CONFIDENCE
IN CKC WITH BREEDERS,
GOVERNMENT, & THE GENERAL
PUBLIC THAT HEALTH & WELL-
BEING OF PUREBRED DOGS IS
TOP OF MIND.*

– Lance Novak

Canadian Kennel Club Executive Director

”

2021: A Renewed Sense of Optimism

As we move into 2021, IPFD is looking to consolidate and capitalize on our strengths, platforms, and major accomplishments, while exploring new opportunities to support the international dog world and all its stakeholders.

IPFD as an organization is about the Big Picture – which means international, multi-stakeholder collaboration – and an inclusive, transparent approach. We are also about an integrated approach to dog health and welfare. Here are some examples of components we are focussing on in 2021:

The Big Picture – just as dog health, well-being, and welfare is a complex but cohesive issue, so are our many resources both separate and part of an integrated whole.

The [Get a GRIHP!](#) (a Globally Relevant Integrated Health Profile) approach works to provide an international perspective on health issues in breeds – eventually including crossbreeds and all dogs. Pieces of the big picture include:

- Available and relevant genetic testing. Genetic testing for dogs – the industry and applications – is a continuously and quickly evolving world. As we maintain the crucial foundation of the [Harmonization of Genetic Testing for Dogs \(HGTD\)](#) database, we are refining our resources to support the dog community – to consumers, veterinarians, the industry, and experts, while continuing to promote best practices among test providers.
- The [Breed Relevance Ratings](#) – needed to maximize the potential of genetic testing to advance the health of individual dogs, as well as breed populations – will continue to advance.
- Conditions of concern within breeds from various sources including our evolving, but not yet public **Health Strategies Database (HSDD)**.
- Evidence-based statistics on occurrence, risk, severity, etc. of those conditions.
- Information appropriate for owners/caretaker, veterinarians, researchers, etc. – harnessing the contributions of our many experts – from within and outside IPFD.

- Presentations on **DogWellNet.com** provide links to other sources of information, work being done by other dog organizations, especially our Contributing and Collaborating Partners.

Collaboration, cooperation, and collective ACTIONS – globally – are needed to approach issues of health and welfare in dogs. Everyone agrees. But creating those integrated activities remains a major challenge. IPFD is working to advance collective approaches through information on DogWellNet.com, the [International Dog Health Workshop \(IDHWs\)](#), webinars, working groups, etc.

- The next, in-person IDHW – as always aimed at engaging key decision leaders from the world of dogs – will be in 2022. In the meantime, we are working on 2021 Webinars to maintain and increase momentum on the actions identified at previous meetings.

We are continuing and expanding our Partnerships – including several projects focussed on ‘healthy dogs’, international collaboration, and other aspects of the Big Picture with our kennel club and industry partners.

At the grassroots level, IPFD is engaging with those breed clubs who have material to share and/or want to benefit from our resources.

- IPFD is producing a **Roadmap** with specific suggestions for stakeholder groups on their role in [Reframing Discussions](#) of dog health and welfare to promote cooperation and collective actions.

Moving into 2021, as the pandemic continues to pose challenges, individuals and organizations are forced to concentrate within their immediate spheres. IPFD will remain active at the international level to work collectively to maintain the global focus and vision which is so needed – for the love of dogs and for the people who love dogs.



GLOBALLY RELEVANT INTEGRATED HEALTH PROFILES (GRIHPs)

We continue to develop GRIHP profiles to provide an international perspective on health issues in breeds – eventually including crossbreeds and all dogs.



HARMONIZATION OF GENETIC TESTING FOR DOGS (HGTD)

In addition to expanding engagement with Genetic Test Providers (GTPs), we will continue to enhance HGTD with Breed Relevance Ratings and other tools for breeders, veterinarians, and dog owners/caretakers.



IPFD INTERNATIONAL DOG HEALTH WORKSHOPS (IDHWs)

Themed webinars in 2021 as planning continues for the next in-person IDHW – aimed at engaging key decision leaders from the world of dogs – in 2022.



HEALTH STRATEGIES (DATABASE HSDD)

Development continues on our Health Strategies Database, which will provide an interactive resource by breed and condition for all diseases/conditions considered important in health strategies from international and local kennel clubs and breed organizations.



A ROADMAP FOR COLLABORATION

IPFD is producing a Roadmap with specific suggestions for stakeholder groups on their role in reframing discussions of dog health and welfare to promote cooperation and collective actions.



EXPANDING PARTNERSHIPS

We have begun several projects with our kennel club and industry Partners. At the grass roots level, we are engaging with those breed clubs who have material to share and/or want to benefit from our resources.

IPFD DogWellNet

c/o Svenska Kennelklubben
Box 771
191 27 Sollentuna
Sweden
Organization no. 802491-2548

info@ipfdogs.com | <https://dogwellnet.com>



[@InternationalPartnershipForDogs](https://www.facebook.com/InternationalPartnershipForDogs)



[@IPFDogs](https://twitter.com/IPFDogs)



[International Partnership For Dogs](https://www.youtube.com/InternationalPartnershipForDogs)



[@ipfdogs](https://www.instagram.com/ipfdogs)

*Front cover photo by MarlyneArt
Back cover photo by Foundry*